

## ad notam LCD HD-SERIES

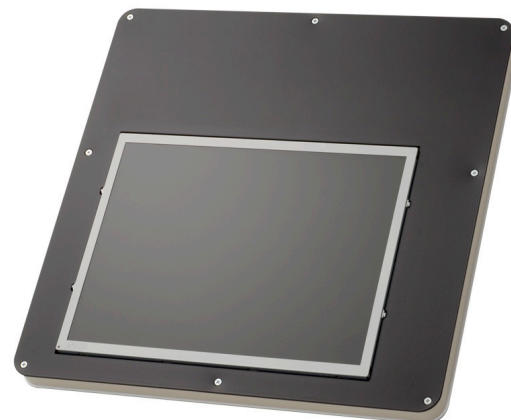
HD 15.0"

MIRROR IMAGE® is the engine that drives images through glass and mirror to deliver superb picture quality. All products are German made, custom-engineered, LCD technology. They are exclusively designed to overcome the unique challenges of operating in ventilation deprived environments and to allow easy and adjustable mounting. The unique optional magnet mounting system accompanying all products is distinctively designed to suit all particularized placements behind any glass surfaces.

When combined with MAGIC MIRROR®, MIRROR IMAGE® turns completely invisible when turned off. MIRROR IMAGE® technology is patent protected.

Like its archetypes, the HD LINE is a high-quality multifunction flush fitted monitor with ever greater operation and implementation possibilities.

The HD LINE also has a second component signal input which supports up to 1080p.



#### PRODUCT HIGHLIGHTS

- Flush fitted monitor
- Enhanced picture quality
- Low Voltage
- Doesn't require ventilation
- Sealed casing
- Ultra slim profile
- Magnetic mounting system allows for easy installation and removal (optional)
- LCD Technology
- Auto signal detection logic
- Optional RF remote control (no IR eye needed)
- DOG system architecture
- Adjustable mounting system for particularized placement

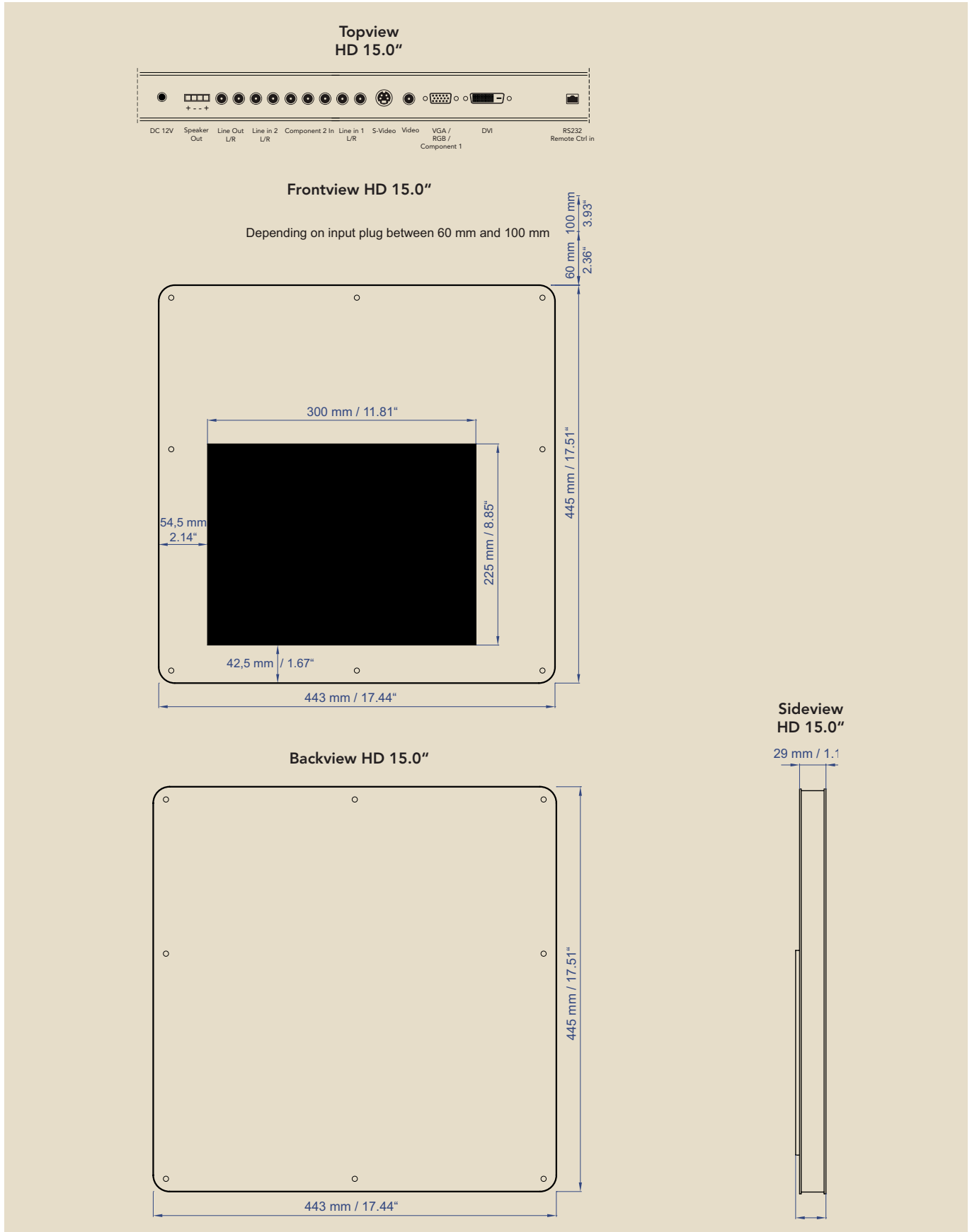
#### Article No.:

| Screensize | Art.No.  |
|------------|----------|
| 15.0"      | HD 150-7 |

## ad notam LCD HD-SERIES

HD 15.0"

### Technical Datasheet:



## ad notam LCD HD-SERIES

HD 15.0"

## Screen Technology:

| Art.No. / Features        | HD 150-7   |
|---------------------------|--|
| Display Type              | TFT Thin Film Transistor   |
| Active Screen Area        | W x H 300 x 225 mm / 11,81" x 8,85"<br>Diagonal 380 mm / 15"   |
| Picture Format            | 4:3  |
| Physical Resolution       | 1024 x 768   |
| Viewing Angle             | Horizontal 140<br>Vertical 120   |
| Brightness                | 550 cd/m <sup>2</sup>  |
| Contrast                  | static 500 : 1   |
| Response Time             | 8 ms   |
| Inputs                    | DVI (HDCP 1.3), AUDIO LINE IN 1/2 (L/R),<br>AUDIO OUT, SPEAKER OUT, Y/C, RGB-S,<br>RGB (VGA, SVGA, XGA, SXGA, UXGA),<br>VGA, FBAS, YRbPr, RJ45 |
| Video Signal Inputs       | PAL / SECAM, NTSC  |
| Operating Temperature     | 5 to 50 Celsius /<br>41 to 122 Fahrenheit  |
| Power                     | DC 12V<br>40 W / 3400 mA   |
| Weight                    | 5,2 kg   |
| Amplifier Output          | 4 x Phoenix-clip,<br>9.6W RMS@4 Ohm per Channel  |
| Equalizer                 | 5-Band   |
| Tuner Receiver            | ---  |
| Tuner Channels            | ---  |
| Receivable Tuner Channels | ---  |
| FM Radio                  | ---  |
| Image Flip                | 180 selectable   |
| Interactive Port RJ45     | IR/RF Input,<br>RS 232 (optional),<br>LED control optional,<br>Power Control (optional)  |
| Remote Control Code       | definable  |

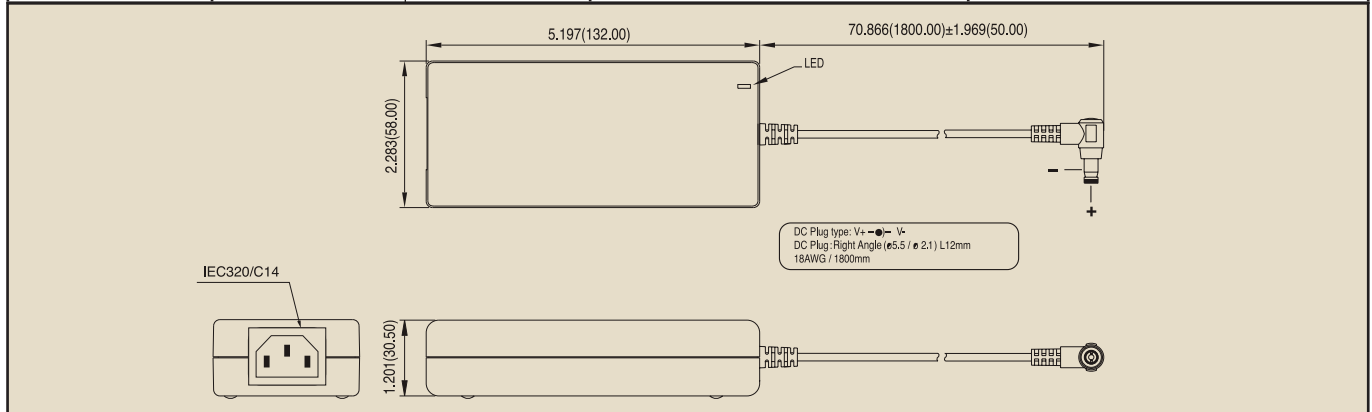


## ad notam LCD HD-SERIES

HD 15.0"

### Power Supply:

| Power        | Voltage      |         | Type    | Operating Temperature |
|--------------|--------------|---------|---------|-----------------------|
|              | IN           | OUT     |         |                       |
| 70 W / 5,5 A | 90 – 264 Vac | 12 V DC | NE-T 70 | 0 - 40 °C             |



### Remote Control (Infrared):

| Type      | Feature         | Dimensions<br>B x H x D                   |
|-----------|-----------------|---|
| AQUA-IR-4 | Water resistant | 110 x 58 x 38 mm<br>4.33" x 2.28" x 1.44" |

